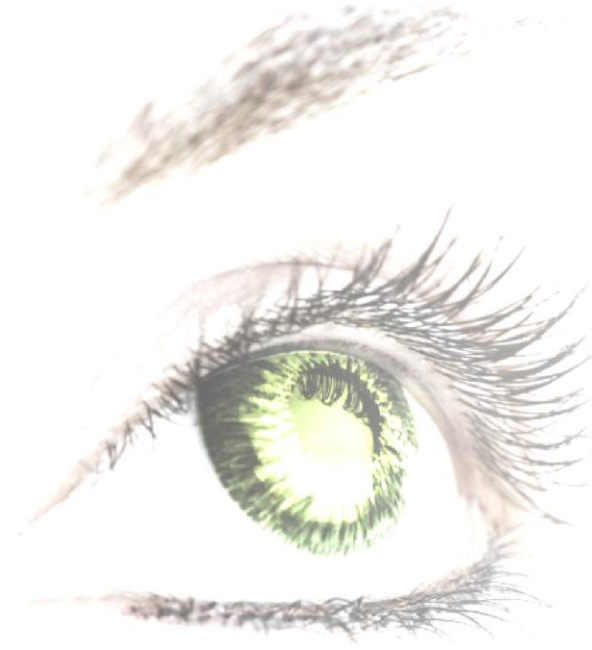


# Siloxane masterbatch Range

Overall SiMB Range

# 2010



Multibase Group  
#09marcom10.V3  
May 2010  
[www.multibase.com](http://www.multibase.com)

Siloxane Masterbatch range \_ #09marcom10.V2 (Crea. Sept 2009)

**We Compound Your Creations**



# MB Siloxane Masterbatch Range

Siloxane Concentration	Carrier	Carrier MFI (g/10mn)	MFI Conditions	Compatibility	Key benefits	
<b>MB SILOXANE MASTERBATCH –Ultra High Molecular Weight PDMS</b>						
MB 50-001 **	50	PPH	12	230°C / 2.16KG	PP / TPE	<p><b>Processing aid :</b></p> <ul style="list-style-type: none"> <li>- Improved throughput,</li> <li>- Reduces extruder torque / Pressure reduction,</li> <li>- Improved organics and inorganics filler dispersion,</li> <li>- Improved mold release.</li> </ul> <p><b>Surface enhancements :</b></p> <ul style="list-style-type: none"> <li>- Lower coefficient of friction,</li> <li>- Predictable and stable within time and temperature,</li> <li>- Durable scratch and mar resistance,</li> <li>- Improved wear resistance / Improved surface feel,</li> <li>- Reduces surface roughness of extrusion</li> </ul>
MB 50-002 **	50	LDPE	8	190°C / 2.16KG	PE / TPE	
MB 50-004	50	HIPS	3.5	200°C / 5KG	Styrenics	
MB 40-006	40	POM	23	190°C / 2.16KG	Acetal	
MB 50-007	50	ABS	1.4	200°C / 5KG	Styrenics	
MB 50-008	50	SAN	8	230°C / 3.8KG	Styrenics / PVC	
MB 50-010	50	Hytrell	8.5	230°C / 2.16KG	Polyesters	
MB 50-011	50	PA6	-	-	Polyamides	
MB 50-017	50	TPU	52	190°C / 8.7KG	TPU	
<b>MB SILOXANE MASTERBATCH – Ultra High Molecular Weight Functionalized PDMS</b>						
MB 50-313	50	LLDPE	35	230°C / 2.16KG	PP / TPE	<p><b>Processing aid :</b></p> <ul style="list-style-type: none"> <li>- Improved throughput,</li> <li>- Reduces extruder torque / Pressure reduction,</li> <li>- Improved organics and inorganics filler dispersion,</li> <li>- Improved mold release.</li> </ul> <p><b>Surface enhancements :</b></p> <ul style="list-style-type: none"> <li>- Lower coefficient of friction / Predictable and stable within time and temperature,</li> <li>- Durable scratch and mar resistance,</li> <li>- Improved wear resistance / Improved surface feel,</li> <li>- Reduces surface roughness of extrusion</li> </ul>
MB 50-314	50	HDPE	57	190°C / 2.16KG	HDPE	
MB 50-315	50	PC	15	300°C / 1.2KG	PC / PC Alloys	
MB 50-320	50	EVA	0.7	190°C / 2.16KG	EVA / PVC	
MB 50-321	50	PPH	35	230°C / 2.16KG	PP / TPE	
MB 25-302 *	25	LDPE	4	190°C / 2.16KG	PE / TPE	
MB 25-381 *	25	PPT	5.5	230°C / 2.16KG	PP	

**Common key benefits of MB Siloxane Masterbatch technology:**

Dry, Free flowing pellets, Polymer specific, High active concentration, Low density, Long shelf life

Most products have full contact approval

**\* Film Extrusion:**

Lower active concentration for better dispersion in film applications

**\*\* These products are also available in micro Pellets:**

Allows for improved dispersion into powder matrixes

**LIMITED WARRANTY INFORMATION - PLEASE READ CAREFULLY**

The information contained herein is offered in good faith and is believed to be accurate. However, because conditions and methods of use of our products are beyond our control, this information should not be used in substitution for customer's tests to ensure that MultiBase's products are safe, effective, and fully satisfactory for the intended end use. Suggestions of use shall not be taken as inducements to infringe on any patent. MultiBase's sole warranty is that the product will meet the MultiBase sales specifications in effect at the time of shipment. The exclusive remedy for breach of such warranty is limited to refund of purchase price or replacement of any product shown to be other than as warranted.

MULTIBASE SPECIFICALLY DISCLAIMS ANY OTHER EXPRESS OR IMPLIED WARRANTY OF FITNESS FOR A PARTICULAR PURPOSE OR MERCHANTABILITY.  
MULTIBASE DISCLAIMS LIABILITY FOR ANY INCIDENTAL OR CONSEQUENTIAL DAMAGES.



# MB Siloxane Masterbatch Range

## Processing Conditions

MB SILOXANE MASTERBATCH	Dilution Rate	Achieved properties
Series MB 50-XXX	0.2% to 2%	<ul style="list-style-type: none"> <li>- Improved processing and flow,</li> <li>- Better mold filling,</li> <li>- Less extruder torque,</li> <li>- Faster throughput</li> <li>- Internal lubrication,</li> <li>- Mold release.</li> </ul>
	2% to 10%	<ul style="list-style-type: none"> <li>- Improved surface properties (lubricity, slip, lower coefficient of friction),</li> <li>- Greater mar and abrasion resistance.</li> </ul>
Series MB 25-XXX	0.4% to 4%	<ul style="list-style-type: none"> <li>- Improved processing and flow,</li> <li>- Better mold filling,</li> <li>- Less extruder torque,</li> <li>- Internal lubrication,</li> <li>- Faster throughput</li> <li>- Mold release.</li> </ul>
	4% to 20%	<ul style="list-style-type: none"> <li>- Improved surface properties (lubricity, slip, lower coefficient of friction),</li> <li>- Greater mar and abrasion resistance.</li> </ul>
Series MB 40-XXX	0.1% to 1%	<ul style="list-style-type: none"> <li>- Improved processing and flow,</li> <li>- Better mold filling,</li> <li>- Less warpage of molded parts.</li> </ul>
	1% to 10%	<ul style="list-style-type: none"> <li>- Improved surface properties (lubricity, slip, lower coefficient of friction),</li> <li>- Improved mar resistance.</li> </ul>

The Siloxane Masterbatch Series may be processed in the same way as the thermoplastics on which they are based. Sufficient level of Siloxane Masterbatch should be blended with virgin polymer pellets to give the desired siloxane level in the final product.

**LIMITED WARRANTY INFORMATION - PLEASE READ CAREFULLY**

The information contained herein is offered in good faith and is believed to be accurate. However, because conditions and methods of use of our products are beyond our control, this information should not be used in substitution for customer's tests to ensure that Multibase's products are safe, effective, and fully satisfactory for the intended end use. Suggestions of use shall not be taken as inducements to infringe on any patent. Multibase's sole warranty is that the product will meet the Multibase sales specifications in effect at the time of shipment. The exclusive remedy for breach of such warranty is limited to refund of purchase price or replacement of any product shown to be other than as warranted.

MULTIBASE SPECIFICALLY DISCLAIMS ANY OTHER EXPRESS OR IMPLIED WARRANTY OF FITNESS FOR A PARTICULAR PURPOSE OR MERCHANTABILITY.  
MULTIBASE DISCLAIMS LIABILITY FOR ANY INCIDENTAL OR CONSEQUENTIAL DAMAGES.