

## VULCAN® 10



An excellent choice for treadwear, traction, cut/chip resistance, and cost effectiveness in high performance passenger and truck treads.

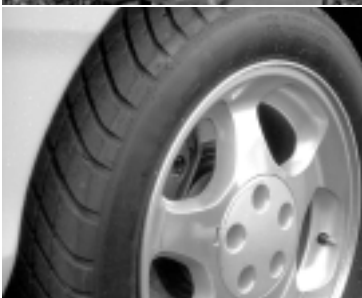
### Performance Features for Speed Rated Passengers Tires

- Improved treadwear over conventional products.
- High hysteresis for excellent traction.
- High elastic modulus for good handling properties.



### Performance Features for Truck and Off-The-Road Treads

- Improved treadwear over conventional products.
- Improved cut/chip performance for off-the-road and mixed service applications.



### Typical Applications for VULCAN® 10 Carbon Black

- High performance passenger tire treads.
- Truck treads.
- OTR transport and loader treads.

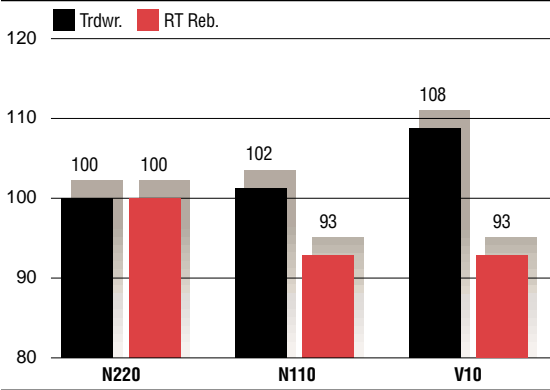
VULCAN 10 and other custom carbon black products have been specifically developed by Cabot Corporation's Tire Blacks business as part of the company's ongoing commitment to meet existing market needs and provide solutions for future product design and processing challenges.



## Treadwear

VULCAN 10 exhibits excellent treadwear resistance coupled with low resilience, yielding a material well suited for performance tire applications.

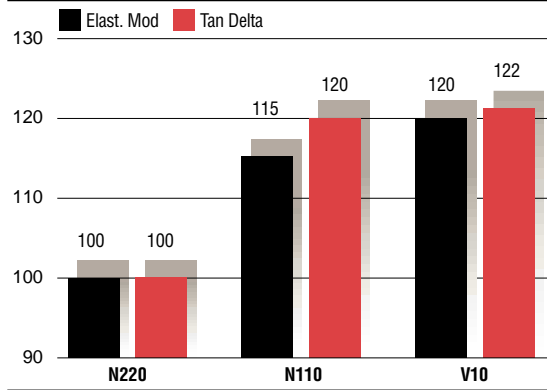
### SBR/BR Passenger Formulation



## Dynamic Properties

High elastic modulus and hysteresis relative to existing products contribute to excellent traction and handling properties when using VULCAN 10.

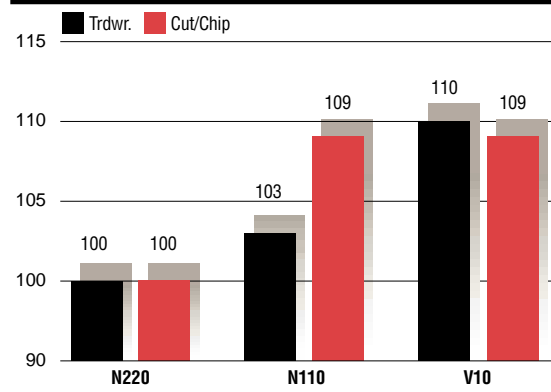
### SBR/BR Passenger Formulation



## Performance in NR

VULCAN 10 exhibits excellent treadwear and good resistance to cutting and chipping as measured by Cabot's Off-the-Road Service Simulator.

### NR Truck Formulation



This information is provided as a convenience and for informational purposes only. No guarantee or warranty as to this information, or any product to which it relates, is given or implied. This information may contain inaccuracies, errors or omissions and CABOT DISCLAIMS ALL WARRANTIES EXPRESS OR IMPLIED, INCLUDING MERCHANTABILITY OR FITNESS FOR A PARTICULAR PURPOSE AS TO (i) SUCH INFORMATION, (ii) ANY PRODUCT OR (iii) INTELLECTUAL PROPERTY INFRINGEMENT. In no event is Cabot responsible for, and Cabot does not accept and hereby disclaims liability for, any damages whatsoever in connection with the use of or reliance on this information or any product to which it relates.

**NORTH AMERICA**  
Cabot Corporation  
Rubber Blacks  
1095 Windward Ridge Pkwy  
Suite 200  
Alpharetta, GA 30005  
(800) 472-4889  
www.cabot-corp.com

**SOUTH AMERICA**  
Cabot Brasil Indústria e Comércio Ltda.  
Av. João Castaldi, 88  
04517-900 São Paulo, SP  
Brazil  
Tel: (55-11) 5536-0388  
www.cabot-corp.com

**EUROPE**  
Cabot Europe Ltd./Cabot Europe/Cabot  
GIE  
Le Nobel 4B  
2 rue Marcel Monge  
92158 Suresnes Cedex, France  
Tel: (33-1) 46-97-58-00  
www.cabot-corp.com

**ASIA, PACIFIC**  
Asia Pacific Region  
Level 14, MNI Tower 2,  
11 Jalan Pinang  
50450 Kuala Lumpur, Malaysia  
Tel: (60-3) 2164 8352  
www.cabot-corp.com